

BlueImage R/T

Real-Time Radar Signal Processing



Display fully-implemented, real-time, radar cross-section (RCS) data at high speed with the advanced image-display system, BlueImage R/T

- Real-time images via real-time data link to the radar
- Generate up to 16 images in real time
- Provides real-time quality assurance
- Employs time-tested image-processing routines of STAR Dynamics' KNOWBELL™ software
- Standard Windows file format for stored data
- Real-time production testing when integrated with STAR Dynamics radars

BlueImage R/T is a significant advancement in Radar Cross Section (RCS) data processing. When this high-speed advanced processing system is coupled with the BlueMax Radar System, production testing can be fully implemented and immediately available.

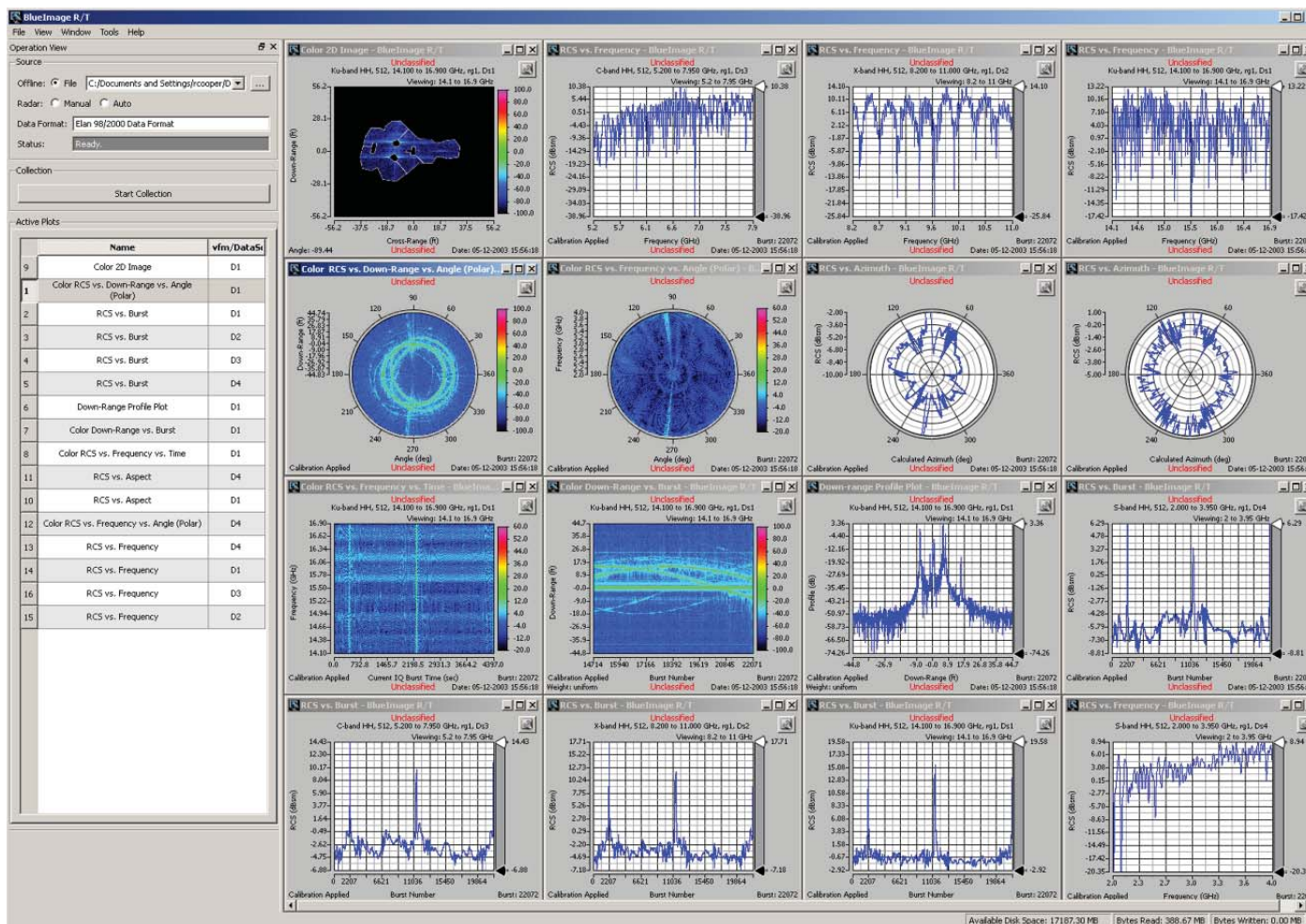
Pass/fail reports are also generated automatically to be included in run documentation. Workspaces are used to allow the user to save and recall complicated configurations.

Customizable

Through customization, BlueImage R/T will not only image data being collected in real time, but will also process the data as it is collected. This benefit allows the user to perform specific pass/fail analysis based on user parameters, which in turn provides immediate determination of the RCS quality of the target under test.

Flexible

Real-time plots can be calibrated via the embedded calibration in the BlueMax data file or from an external calibration file. Images can have real-time IER applied and well as real-time motion compensation for dynamic measurements. Live data can be displayed real-time and previously collected data can be replayed.



BLUEIMAGE R/T SPECIFICATIONS

Processing Computer

Hardware: Most any mid-level PC and up

Operating System: Windows 2000, XPpro, Vista, Server 2003, Server 2008

Recommendations

Hardware: 2-GHz Processor
4 GB RAM
Mid to high-end graphics adapter

Operating System: Windows XPpro or newer

